



## **Left Hand 12-1/4" x 3-1/2"; ELECTRIC Brake Assembly 4 Hole Mount Rockwell American Brand 8K axles**

4739-R : Left Hand 12-1/4" x 3-12" Electric Brake Assembly 4  
Hole Mount Rockwell American Brand 8K axles!

[Read More](#)

SKU: 4739-L

Categories: [Brakes](#), [Electric](#)

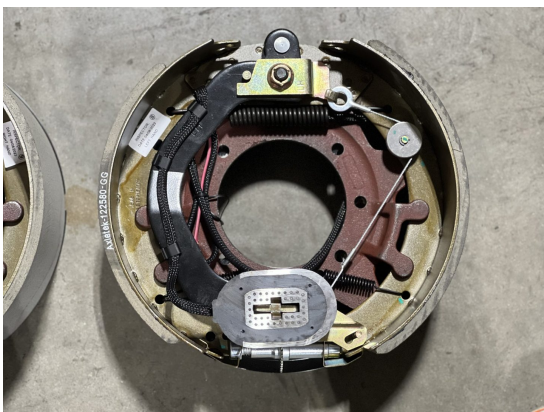
### **Product Description**

***12-1/4" x 3-1/2" electric brake assembly for Left Hand Side (Drivers).  
Fits Rockwell American / Quality Brank 8K Axles***

Assembly includes 4 Hole Back Plate, Pads, magnet, springs, complete.

[It is designed to be used on an axle for 8,000lbs.](#)

It features the common 4 holes connect.



## **Left Hand 12-1/4" x 3-3/8"; ELECTRIC Brake Assembly 7 Hole Mount Dexter Brand 9K / 10K axles**

23-450 : Left Hand 12-1/4" x 3-3/8" Electric Brake Assembly 7  
Hole Mount Dexter Brand 9K / 10K axles

[Read More](#)

SKU: 23-450

Categories: [Brakes](#), [Electric](#)

### **Product Description**

***This is an AUTHENTIC Dexter Brand 12-1/4" x 3-3/8" electric brake assembly for Left Hand Side (Driver).***

Assembly includes 7 Hole Cast Back Plate, Pads, magnet, springs, complete.

[It is designed to be used on an axle rated 9,000 - 10,000lbs.](#)

Made in USA

---



## **Left Hand 12-1/4" x 3-3/8"; ELECTRIC Brake Assembly 7 Hole Mount Fits Dexter / LCI 9K / 10K axles**

23-450 : Left Hand 12-1/4" Electric Brake Assembly 7 Hole Mount  
Dexter Brand 9K / 10K axles

[Read More](#)

SKU: IM23-450

Categories: [Brakes](#), [Electric](#)

## Product Description

***MAT brand 12-1/4" x 3-3/8" electric brake assembly for Left Hand Side (Driver).***

***Compatible w/ Dexter / Lippert 10K GD axles***

***Matches 23-450 Dexter Part #***

Assembly includes 5 Hole or 7 Hole (Universal) Cast Back Plate, Pads, magnet, springs, complete.

It is designed to be used on an axle rated 9,000 - 10,000lbs.

---



## **Left Hand 12-1/4" x 4"; ELECTRIC Brake Assembly 7 Hole Mount Fits Dexter 10K HD axles**

23-438 : Left Hand 12-1/4" Electric Brake Assembly 7 Hole Mount  
Dexter Brand 10K HD axles

[Read More](#)

SKU: IM23-438

Categories: [Brakes](#), [Electric](#)

## Product Description

***12-1/4" x 4" electric brake assembly for Left Hand Side (Driver).***

***Fits Dexter / Lippert 10K HD Brake Assembly, part# 23-438***

WILL NOT FIT DRUMS LABELED 9-44 OR 9-123. THOSE NUMBERS ARE LIGHT DUTY 10K  
ONLY FITS DRUM 9-27

Assembly includes 7 Hole Cast Back Plate, Pads, magnet, springs, complete.

It is designed to be used on an axle rated 10,000 Heavy Duty

## Self Adjust Brake Assembly

---



### **Left Hand 12-1/4" x 5"; ELECTRIC Brake Assembly 7 Hole Mount Fits Dexter 12K / 15K axles**

23-442 / 23-446 : Left Hand 12-1/4" x 5" Electric Brake Assembly  
7 Hole Mount Dexter Brand 12K / 15K axles

[Read More](#)

SKU: IM23-442/23-446

Categories: [Brakes](#), [Electric](#)

### **Product Description**

***AXLETEK brand 12-1/4" x 5" electric brake assembly for Left Hand Side  
(Driver).***

***Compatible w/ Dexter / Lippert 12K / 15k axles***

***Matches 23-442 or 23-446 Dexter Part #***

Assembly includes 7 Hole Cast Back Plate, Pads, magnet, springs, complete.

[It is designed to be used on an axle rated 12,000 - 15,000lbs.](#)

---



## Left Hand Metal Tail Light Box w/ 6" and 3/4" LED lights

Left Hand Metal Tail Light Box w/ 6" and 3/4" LED lights

[Read More](#)

**SKU:** MetBoxKitLH

**Categories:** [Lights & Electrical Accessories](#)

### Product Description

Brand: D2E

Left Hand Side Metal Tail Light Box w/ 6" Oval Red LED and 3/4" Round LED lights

Includes Tag Light and Tag Plate



## Left Hand Standard 2 stud mount Tail Light

Left Hand Standard 2 stud mount Tail Light!

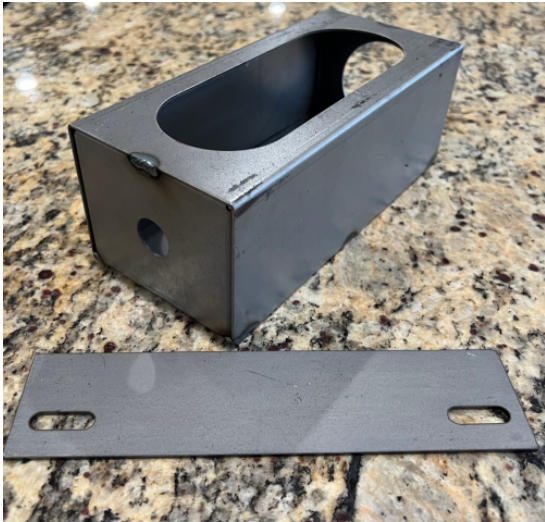
[Read More](#)

**SKU:** Tail light Left Hand Square

**Categories:** [Lights & Electrical Accessories](#)

### Product Description

Left Hand Tail Light OEM features illumination light for license plates mounts via 2 studs approx. 2" apart incandescent light bulbs



## Left Hand Trailer Tail Light Boxes used on 82" wide trailers

Left Side Light boxes used on 82" wide trailers

[Read More](#)

**SKU:** LtBoxesLH

**Categories:** [Light Housings / Brackets](#)

### Product Description

Each box measures: 8.25"L x 3.25"W x 4"H not including the tag bracket on the Left box.

Cut Out houses 2" LED lights on the end

Cut Out Houses 6" LED Oval Light on Rear

Unpainted Metal Finish with Oil Coating for Rust Prevention

Factory OEM boxes.



## LH 12-1/4" x 5" HYDRAULIC Brake Assembly 7 Hole Mount Fits Dexter 12K / 15K axles

**23-408 / 23-406** : LH 12-1/4" x 5" Hydraulic Brake  
Assembly 7 Hole Mount Dexter Brand 12K / 15K axles

[Read More](#)

SKU: 23-408 / 23-406

Categories: [12K](#), [15K](#), [Brakes](#), [Hydraulic](#)

### Product Description

**MAT brand 12-1/4" x 5" Hydraulic brake assembly for Driver Side (Left).**  
**Compatible w/ Dexter / Lippert 12K / 15k axles**  
**Matches 23-408 / 23-406 Dexter Part #**

Assembly includes 7 Hole Cast Back Plate, Pads, magnet, springs, complete.  
[It is designed to be used on an axle rated 12,000 - 15,000lbs.](#)



## Lippert Brand 8000 LBS Hybrid Electric Brake Complete Trailer Axle Assembly

8K Brake Complete Trailer Axle Assembly Made In USA

[Read More](#)

SKU: L8KaxleBRAKE-1-1-1-1

Categories: [8000 # Axles](#), [Axles](#)

### Product Description

Lippert Brand 8000 LBS BRAKE AXLE

IN STOCK SIZES:

95" Outer Hub Face / 80" Spring Center Measurement

85" Outer Hub Face / 70" Spring Center Measurement

Electric Brakes and 5/8" studs

Please call 912.367.3007 Ext 310 OR 3011 for Freight Quote

PLEASE NOTE, A NEW FREIGHT SURCHARGE OF \$100 IS ADDED TO ANYTHING OVER  
97" Length  
Custom Sizes available.

These include the EASY/ACCU-LUBE spindles, so no need to add buddy bearings.

This is a brand new brake axle rated at 8000 lbs. Does have ELECTRIC brakes, already painted, with 26.5" Slipper springs. Has a 8x6.5" bolt pattern, other bolt patterns available!  
Simply bolt on the tires and you're ready to go.

**To ensure you receive the correct axles, email or call me.**

**To measure the Hub Face: measure from one end of the axle where the lug bolts protrude out from to the other end at the same point. This is the Hub Face.**

**To measure the Spring Center: Measure from the middle of the spring center on one end to the spring center on the other end. There should be a/b 15" difference between the Hub Face and the Spring Center measurement.**

**We also have Torsion axles or axles with hydraulic brakes in addition to having many Drop axles in stock.**

**All Freight quotes are considered to a Business/Commercial Address or Nearest Terminal to the provided zip/postal code.**

**Freight Residential Delivery is available at an additional cost.**



## **LoadStar 4.80-12 Galvanized Spoked Assembly 4H/Cply**

4.80-12 Galvanized Spoked Assembly 4H/Cply FREE SHIPPING TO 48 CONTINENTAL US STATES!!!!

[Read More](#)

SKU: 30630

Categories: [12"](#)

## Product Description

Tire Specs:

- •4.80-12 LoadStar K353 Cply
  - •High Speed Trailer Tire
  - •Tubeless Type
  - •Bias Ply
  - •Load Range C, 990# capacity
  - •S.W: 4.8" •O.D: 20.5"
  - •Max PSI 90
  - •Rim 12x4
  - •The LoadStar Trailer tire provides a 2 year warranty with the warranty number imprinted on each tire.
  - •These tires provide: Longer Wear, Better Towing Stability, Reduced Rolling Resistance and meets all US Dept of Transportation requirements.
  
  - Rim Specs
  - 12"x4" Galvanized Spoke Steel Rim
  - Bolt Pattern 4 x 4"
  - Rim Capacity 1045#
  - 0 offset
  - 2.84" Pilot Diameter
- 



## LoadStar 4.80-12 Galvanized Spoked Assembly 5H/Cply

30670 : LoadStar 4.80-12 Galvanized Spoked Assembly 5H/Cply  
FREE SHIPPING TO 48 CONTINENTAL US STATES!!!!

[Read More](#)

SKU: 30670

Categories: [12"](#)

## Product Description

Tire Specs:

- •4.80-12 LoadStar K353 Cply
- •High Speed Trailer Tire
- •Tubeless Type
- •Bias Ply
- •Load Range C, 990# capacity

- •S.W: 4.8" •O.D: 20.5"
  - •Max PSI 90
  - •Rim 12x4
  - •The LoadStar Trailer tire provides a 2 year warranty with the warranty number imprinted on each tire.
  - •These tires provide: Longer Wear, Better Towing Stability, Reduced Rolling Resistance and meets all US Dept of Transportation requirements.
  - Rim Specs
  - 12"x4" Galvanized Spoke Steel Rim
  - Bolt Pattern 5 x 4.5"
  - Rim Capacity 1045#
  - 0 offset
  - 3.19" Pilot Diameter
- 



## LoadStar 4.80-12 Gloss White Spoke Assembly 4H/Cply 6ply

30620 : LoadStar 4.80-12 Gloss White Spoke Assembly 4H/Cply 6ply FREE SHIPPING TO 48 CONTINENTAL US STATES!!!!

[Read More](#)

**SKU:** 30620

**Categories:** [12"](#)

### Product Description

Tire Specs:

- •4.80-12 LoadStar K353 Cply
- •High Speed Trailer Tire
- •Tubeless Type
- •Bias Ply
- •Load Range C, 990# capacity
- •S.W: 4.8" •O.D: 20.5"
- •Max PSI 90
- •Rim 12x4
- •The LoadStar Trailer tire provides a 2 year warranty with the warranty number imprinted on each tire.
- •These tires provide: Longer Wear, Better Towing Stability, Reduced Rolling Resistance and meets all US Dept of Transportation requirements.
- Rim Specs
- 12"x4" Gloss White Spoke Steel Rim w/ Blue/Red Pinstripe
- Bolt Pattern 4 x 4"

- Rim Capacity 1045#
  - 0 offset
  - 2.84" Pilot Diameter
- 



## **LoadStar 4.80-12 Gloss White Spoke Assembly 5H/Cply 6ply**

30660 : LoadStar 4.80-12 Galvanized Spoked Assembly 5H/Cply 6ply FREE SHIPPING TO 48 CONTINENTAL US STATES!!!!

[Read More](#)

**SKU:** 30660

**Categories:** [12"](#)

### **Product Description**

Tire Specs:

- •4.80-12 LoadStar K353 Cply
  - •High Speed Trailer Tire
  - •Tubeless Type
  - •Bias Ply
  - •Load Range C, 990# capacity
  - •S.W: 4.8" •O.D: 20.5"
  - •Max PSI 90
  - •Rim 12x4
  - •The LoadStar Trailer tire provides a 2 year warranty with the warranty number imprinted on each tire.
  - •These tires provide: Longer Wear, Better Towing Stability, Reduced Rolling Resistance and meets all US Dept of Transportation requirements.
  
  - Rim Specs
  - 12"x4" Gloss White Spoke Steel Rim w/ Blue/Red Pinstripe
  - Bolt Pattern 5 x 4.5"
  - Rim Capacity 1045#
  - 0 offset
  - 3.19" Pilot Diameter
-



## **LoadStar 5.30-12 Gloss White Spoke Wheel Assembly 4H/C ply 6 ply**

30780 : LoadStar 5.30-12 Gloss White Spoke Wheel Assembly  
4H/C ply 6 ply FREE SHIPPING TO 48 CONTINENTAL US  
STATES!!!!

[Read More](#)

**SKU:** 30780

**Categories:** [12"](#)

### **Product Description**

Tire Specs:

- •5.30-12 LoadStar K353 Cply
  - •High Speed Trailer Tire
  - •Tubeless Type
  - •Bias Ply
  - •Load Range C, 1045# capacity
  - •S.W: 5.6" •O.D: 21.9"
  - •Max PSI 70
  - •Rim 12x4
  - •The LoadStar Trailer tire provides a 2 year warranty with the warranty number imprinted on each tire.
  - •These tires provide: Longer Wear, Better Towing Stability, Reduced Rolling Resistance and meets all US Dept of Transportation requirements.
  - 
  - Rim Specs
  - 12"x4" Gloss White Spoke Steel Rim w/ Red/Blue Pinstripe
  - Bolt Pattern 4 x 4"
  - Rim Capacity 1045#
  - 0 offset
  - 2.84" Pilot Diameter
-



## **LoadStar 5.30-12 Gloss White Spoke Wheel Assembly 5H/C ply 6 ply**

30820 : LoadStar 5.30-12 Gloss White Spoke Wheel Assembly  
5H/C ply 6 ply FREE SHIPPING TO 48 CONTINENTAL US  
STATES!!!!

[Read More](#)

**SKU:** 30820

**Categories:** [12"](#)

### **Product Description**

Tire Specs:

- 5.30-12 LoadStar K353 Cply
  - High Speed Trailer Tire
  - Tubeless Type
  - Bias Ply
  - Load Range C, 1045# capacity
  - S.W: 5.6" •O.D: 21.9"
  - Max PSI 70
  - Rim 12x4
  - The LoadStar Trailer tire provides a 2 year warranty with the warranty number imprinted on each tire.
  - These tires provide: Longer Wear, Better Towing Stability, Reduced Rolling Resistance and meets all US Dept of Transportation requirements.
  - 
  - Rim Specs
  - 12"x4" Gloss White Spoke Steel Rim w/ Red/Blue Pinstripe
  - Bolt Pattern 5 x 4.5"
  - Rim Capacity 1045#
  - 0 offset
  - 3.19" Pilot Diameter
-



## **LoadStar K371 4.80/4.00-8 white wheel Assembly 4H/Bply 4ply**

30000 : LoadStar K371 4.80/4.00-8 white wheel Assembly 4H/Bply 4ply

[Read More](#)

**SKU:** 30000

**Categories:** [8"](#)

### **Product Description**

#### **Tire Specs:**

- 4.80/4.00-8 B ply
- High Speed Trailer Tire
- Tubeless type
- Bias Ply
- Load Range B, 590# capacity
- S.W: 4.6"
- O.D: 16.1"
- Max PSI 60
- Rim 8x3.75
- The LoadStar Trailer tire provides a 2 year warranty with the warranty number imprinted on each tire.
- These tires provide: Longer Wear, Better Towing Stability, Reduced Rolling Resistance and meets all US Dept of Transportation requirements.
- 

- **Rim Specs:**

- 

- 8"x3.75" 1 Piece Steel Powder Coat Gloss White
  - Clear Coated Rim
  - Bolt Pattern 4 x 4"
  - Pilot Diameter 2.84"
  - Rim Capacity 900#
  - 0 offset
-



## **LoadStar K371 4.80/4.00-8 white wheel Assembly 4H/Cply 6ply**

30040 : LoadStar K371 4.80/4.00-8 white wheel Assembly 4H/Cply 6ply

[Read More](#)

**SKU:** 30040

**Categories:** [8"](#)

### **Product Description**

#### **Tire Specs:**

- 4.80/4.00-8 C ply 6 ply
- High Speed Trailer Tire
- Tubeless type
- Bias Ply
- Load Range C, 760# capacity
- S.W: 4.7"
- O.D: 16.1"
- Max PSI 90
- Rim 8x3.75
- The LoadStar Trailer tire provides a 2 year warranty with the warranty number imprinted on each tire.
- These tires provide: Longer Wear, Better Towing Stability, Reduced Rolling Resistance and meets all US Dept of Transportation requirements.

#### **• Rim Specs:**

- - 8"x3.75" 1 Piece Steel Painted Gloss White
    - Clear Coated Rim
    - Bolt Pattern 4 x 4"
    - Pilot Diameter 2.81"
    - Rim Capacity 910#
    - 0 offset
-



## **LoadStar K371 4.80/4.00-8 white wheel Assembly 5H/Bply 4ply**

30020 : LoadStar K371 4.80/4.00-8 white wheel Assembly 5H/Bply 4ply

[Read More](#)

**SKU:** 30020

**Categories:** [8"](#)

### **Product Description**

#### **Tire Specs:**

- 4.80/4.00-8 B ply
- High Speed Trailer Tire
- Tubeless type
- Bias Ply
- Load Range B, 590# capacity
- S.W: 4.6"
- O.D: 16.1"
- Max PSI 60
- Rim 8x3.75
- The LoadStar Trailer tire provides a 2 year warranty with the warranty number imprinted on each tire.
- These tires provide: Longer Wear, Better Towing Stability, Reduced Rolling Resistance and meets all US Dept of Transportation requirements.
- 

#### **• Rim Specs:**

•

- 8"x3.75" 1 Piece Steel Painted Gloss White
- Clear Coated Rim
- Bolt Pattern 5 x 4.5"
- Pilot Diameter 2.81"
- Rim Capacity 910#
- 0 offset



## **LoadStar K371 4.80/4.00-8 White Wheel Assembly 5H/Cply 6ply**

LoadStar K371 4.80/4.00-8 white wheel Assembly 5H/Cply 6ply

[Read More](#)

**SKU:** 30060

**Categories:** [8"](#)

### **Product Description**

#### **Tire Specs:**

- 4.80/4.00-8 C ply 6 ply
- High Speed Trailer Tire
- Tubeless type
- Bias Ply
- Load Range C, 760# capacity
- S.W: 4.7"
- O.D: 16.1"
- Max PSI 90
- Rim 8x3.75
- The LoadStar Trailer tire provides a 2 year warranty with the warranty number imprinted on each tire.
- These tires provide: Longer Wear, Better Towing Stability, Reduced Rolling Resistance and meets all US Dept of Transportation requirements.

#### **• Rim Specs:**

- - 8"x3.75" 1 Piece Steel Painted Gloss White
  - Clear Coated Rim
  - Bolt Pattern 5 x 4.5"
  - Pilot Diameter 2.81"
  - Rim Capacity 910#
  - 0 offset



## **LoadStar K399 ST215/60-8 Gloss White Wheel Assembly 5H/Cply 6ply**

3H310 : LoadStar K399 ST215/60-8 Gloss White Wheel Assembly  
5H/Cply 6ply

[Read More](#)

**SKU:** 3H310

**Categories:** [8"](#)

### **Product Description**

#### **Tire Specs:**

- ST215/60-8 C ply K399 LoadStar Tire
- 18.5/8.50-8 Alternate Size
- High Speed Trailer Tire
- Tubeless type
- Bias Ply
- Load Range C, 935# capacity
- S.W: 8.9"
- O.D: 18.3"
- Max PSI 50
- Rim 8x7
- The LoadStar Trailer tire provides a 2 year warranty with the warranty number imprinted on each tire.
- These tires provide: Longer Wear, Better Towing Stability, Reduced Rolling Resistance and meets all US Dept of Transportation requirements.

#### **• Rim Specs:**

- - 8"x7" 1 Piece Steel Painted Gloss White
  - Clear Coated Rim
  - Bolt Pattern 5 x 4.5"
  - Pilot Diameter 2.81"
  - Rim Capacity 910#
  - 0 offset



## **LoadStar Karrier H/D ST235/85R16 E ply RADIAL Tire**

This Popular Radial offers double steel belts with full nylon plies for heavy-duty applications and increased tire life.

[Read More](#)

**SKU:** 10500

**Categories:** [16"](#)

### **Product Description**

- ST235/85R16 Eply
- High Speed Trailer Tire
- Tubeless Type
- Radial Ply
- Load Range E, 3640# capacity
- S.W: 9.4"
- O.D: 31.6"
- Max PSI 95
- Rim 16x6.5
- The LoadStar Trailer tire provides a 2 year warranty with the warranty number imprinted on each tire.
- These tires provide: Longer Wear, Better Towing Stability, Reduced Rolling Resistance and meets all US Dept of Transportation requirements.



## **LoadStar Karrier H/D ST235/85R16 F**

## ply RADIAL Tire 3960# capacity

This popular Radial offers double steel belts with full nylon plies for heavy-duty applications and increased tire life.

[Read More](#)

SKU: 10501

Categories: [16"](#)

### Product Description

- ST235/85R16 Fply
- High Speed Trailer Tire
- Tubeless Type
- Radial Ply
- Load Range F, 3960# capacity
- S.W: 9.4"
- O.D: 31.6"
- Max PSI 110
- Rim 16x6.5
- The LoadStar Trailer tire provides a 2 year warranty with the warranty number imprinted on each tire.
- These tires provide: Longer Wear, Better Towing Stability, Reduced Rolling Resistance and meets all US Dept of Transportation requirements.



### LoadStar Karrier Radial ST205/75R15 5H/C ply Gloss BLACK Trailer Wheel Assembly

D2E32407 : LoadStar ST205/75R15 5H/C ply Gloss BLACK Radial Trailer Wheel Assembly !

[Read More](#)

SKU: D2E32407

Categories: [15"](#)

### Product Description

- Tire Specs
- RADIAL

- KENDA LOADSTAR KARRIER ST205/75R15 C ply (6 ply)
- F78x15 Alternate Size
- High Speed Trailer Tire
- Tubeless Type
- Load Range C, 1820# capacity
- Sidewall 8.1"
- O.D. 27.3"
- Max PSI 50
- RIM 15x5.5
- Nylon Bias Ply Constructed Tire for Durability and Bruise Resistance.
- The LoadStar Trailer tire provides a 2 year warranty with the warranty Phone number imprinted on each tire.
- These tires provide: Longer Wear, Better Towing Stability, Reduced Rolling Resistance and meets all US Dept of Transportation requirements.
- Down To Earth Factory OEM Tire.
- 
- 
- 
- **Rim Specs**
- 15"x5" BLACK Spoke Steel Rim, Powder Coated
- Bolt Pattern 5 x 4.5"
- Rim Capacity & PSI 1820# / 50PSI
- 0 offset
- 3.19" Pilot Diameter



## **LoadStar Karrier Radial ST225/75R15 5H/D ply Gloss WHITE Trailer Wheel Assembly**

D2E32545 : LoadStar ST225/75R15 5H/D ply Gloss WHITE Radial Trailer Wheel Assembly !

[Read More](#)

SKU: D2E32545

Categories: [15"](#)

## Product Description

- **Tire Specs**
- **RADIAL**
- **KENDA LOADSTAR KARRIER ST225/75R15 Dply (8 PLY)**
- H78x15 Alternate Size
- •High Speed Trailer Tire
- •Tubeless Type
- Radial Ply
- Load Range D, 2540# capacity
- S.W: 8.9"
- O.D: 28.4"
- Max PSI 65
- Rim 15x6
- The LoadStar Trailer tire provides a 2 year warranty with the warranty number imprinted on each tire.
- These tires provide: Longer Wear, Better Towing Stability, Reduced Rolling Resistance and meets all US Dept of Transportation requirements.
- 
- 
- 
- Rim Specs
- 15"x6" WHITE Spoke Steel Rim Powder Coated w/ Red/Blue Pinstripe
- Bolt Pattern 5 x 4.5"
- Rim Capacity & PSI 2050# / 75PSI
- 0 offset
- 3.19" Pilot Diameter



### **LoadStar Karrier Radial ST225/75R15 6H/D ply Gloss BLACK Trailer Wheel Assembly**

D2E32566 : LoadStar ST225/75R15 6H/D ply Gloss BLACK Radial

Trailer Wheel Assembly !

[Read More](#)

**SKU:** D2E32566

**Categories:** [15"](#)

## Product Description

- **Tire Specs**
- **RADIAL**
- **KENDA LOADSTAR KARRIER ST225/75R15 Dply (8 PLY)**
- H78x15 Alternate Size
- •High Speed Trailer Tire
- •Tubeless Type
- Radial Ply
- Load Range D, 2540# capacity
- S.W: 8.9"
- O.D: 28.4"
- Max PSI 65
- Rim 15x6
- The LoadStar Trailer tire provides a 2 year warranty with the warranty number imprinted on each tire.
- These tires provide: Longer Wear, Better Towing Stability, Reduced Rolling Resistance and meets all US Dept of Transportation requirements.
- 
- 
- 
- **Rim Specs**
- 15"x6" Black Spoke Steel Rim Powder Coated
- Bolt Pattern 6 x 5.5"
- Rim Capacity & PSI 2830# / 80PSI
- 0 offset
- 4.27" Pilot Diameter



# LoadStar Karrier ST205/75R14 F78x14 C ply RADIAL Tire

D2E10234 : LoadStar Karrier ST205/75R14 C ply RADIAL Tire!

[Read More](#)

SKU: D2E10234

Categories: [14"](#)

## Product Description

- **KENDA LOADSTAR KARRIER RADIAL ST205/75R14 C ply (6 ply)**
- F78x14 Alternate Size
- High Speed Trailer Tire
- Tubeless Type
- Load Range C, 1760# capacity
- Sidewall 8.1"
- O.D. 26.3"
- Max PSI 50
- Rim 14x5.5
- Radial Ply Constructed Tire for Smooth Ride and Longer Tread Life.
- The LoadStar Trailer tire provides a 2 year warranty with the warranty Phone number imprinted on each tire.
- These tires provide: Longer Wear, Better Towing Stability, Reduced Rolling Resistance and meets all US Dept of Transportation requirements.
- Down To Earth Factory OEM Tire.



## MAT Disc Brake Pad, Dexter 10000 12000 10k-12K 4 Pad Kit with Hardware, Services 1 Axle

For Dexter Brand 10K / 12K Disc Pad Set (4 Total)

[Read More](#)

SKU: TW7020MDexKit

Categories: [Brakes](#), [Disc](#)

## Product Description

BRAND: MAT for Dexter Brand Axles 10K / 12K  
Disc Brake Pad, 10k-12K,4 Pad Kit, Services 1 Axle  
Disc brake pad kit  
Fits 10K and 12K straight axles  
Fits 13G and 13D Torflex axles  
Use with 089-002-02 brake caliper  
Sold as a set of 4 Pads for 2 wheels.

1 SET IS FOR 1 AXLE

---



## **MAT fits Dexter & Lippert True 8000 8K Brake Hub, 12-1/4x3-3/8", 5/8" studs GREASE Bath 8-285-8**

MPARTS fits Dexter 8-285-8 Brake Hub, 5/8" Studs, Free Shipping to Lower 48 US States

[Read More](#)

**SKU:** 99-86580-56KIT

**Categories:** [8000# Hubs](#)

## Product Description

Brand: MAT  
Dexter Part#: 8-285-8  
Hub fits brake 12-1/4" x 3-3/8"  
Pilot: 4.75"  
Stud Size: 5/8"  
Lube Type: GREASE ONLY

Fits the Below Items Included:

Inner Bearing: 25580

Outer Bearing: 02475

Seal: 10-63 (3.376" O.D., 2.250" I.D.)



## **MAT fits Dexter & Lippert True 8000 8K Brake Hub, 12-1/4x3-3/8", 5/8" studs OIL / GREASE Bath 8-285-10**

MPARTS fits Dexter 8-285-10 Brake Hub, 5/8" Studs, Free Shipping to Lower 48 US States

[Read More](#)

**SKU:** 99-86580-46KIT

**Categories:** [8000# Hubs](#)

### **Product Description**

Brand: MAT

Dexter Part#: 8-285-10

Hub fits brake 12-1/4" x 3-3/8"

Pilot: 4.75"

Stud Size: 5/8"

Lube Type: Oil OR Grease Lube

Fits the Below Items Included:

Inner Bearing: 25580

Outer Bearing: 02475

Seal: 10-63 (3.376" O.D., 2.250" I.D.)

Oil Cap Assembly: 21-35

---



## **MAT fits Dexter & Lippert True 8000 8K Brake Hub, 12-1/4x3-3/8", 9/16" studs GREASE Bath 8-285-11**

MPARTS fits Dexter 8-285-11 Brake Hub, 9/16" Studs, Free Shipping to Lower 48 US States

[Read More](#)

**SKU:** 99-86580-36FKIT

**Categories:** [8000# Hubs](#)

### **Product Description**

Brand: MAT

Dexter Part#: 8-285-11

Hub fits brake 12-1/4" x 3-3/8"

Pilot: 4.75"

Stud Size: 9/16"

Lube Type: GREASE ONLY

Fits the Below Items Included:

Inner Bearing: 25580

Outer Bearing: 02475

Seal: 10-63 (3.376" O.D., 2.250" I.D.)

Oil Cap Assembly: 21-35



# **MAT fits Dexter & Lippert True 8000 8K Brake Hub, 12-1/4x3-3/8", 9/16" studs OIL OR GREASE Bath 8-285-9**

MPARTS fits Dexter 8-285-9 Brake Hub, 9/16" Studs, Free Shipping to Lower 48 US States

[Read More](#)

**SKU:** 99-86580-26KIT

**Categories:** [8000# Hubs](#)

## **Product Description**

Brand: MAT

Dexter Part#: 8-285-9

Hub fits brake 12-1/4" x 3-3/8"

Pilot: 4.75"

Stud Size: 9/16"

Lube Type: OIL OR GREASE

Fits the Below Items Included:

Inner Bearing: 25580

Outer Bearing: 02475

Seal: 10-63 (3.376" O.D., 2.250" I.D.)

Oil Cap Assembly: 21-35

---