

DOWN 2 EARTH TRAILERS
IMAGE COMING SOON!!!!

Mobile Home Wheel LT7-14.5/TL600 Assembly Dply

Mobile Home Wheel LT7-14.5/TL600 Assembly Dply!

[Read More](#)

SKU: D2E33010

Categories: [14.5" Mobile Home](#)

Product Description

- **TIRE SPECS:**
- KENDA K370
- 7-14.5LT
- PLY: D (8PLY)
- SW: 7.3"
- O.D: 25.3"
- CAPACITY: 1870 LBS
- MAX PSI: 70
- RIM SIZE: 14.5" X 6"
-
- Mobile Home Wheel rim TL600
- Rim: 14.5" x 6"
- Max PSI: 116
- Max Capacity: 3100 lbs



Phoenix USA BLACK Hubcover 5 lug on 4.5" fits 8 thru 15" 5 lug hubs

Phoenix USA BLACK WHITE Hubcover 5 lug on 4.5" fits 8 thru 15" 5 lug hubs

[Read More](#)

SKU: D2EQT545BHS

Categories: [Accessories](#)

Product Description

- BLACK Plastic Center Cap for 8 - 15" Rims
- Fits only 5 on 4.5" Bolt Pattern
- Brand: Phoenix USA
- Part #: QT545BHS
- Also fits over budding bearings



PHoenix USA BLACK Hubcover 6 lug on 5.5" fits 15 & 16" 6 lug hubs

Phoenix USA BLACK Hubcover 6 lug on 5.5" fits 15 & 16" 6 lug hubs

[Read More](#)

SKU: D2EQT655BHN

Categories: [Accessories](#)

Product Description

- BLACK Plastic Center Cap for 15 & 16" Rims
- Fits only 6 on 5.5" Bolt Pattern

- Also fits over budding bearings



PHoenix USA Chrome-plated Hubcover 5 lug on 4.5" fits 8 thru 15" 5 lug hubs

Phoenix USA Chrome-plated Hubcover 5 lug on 4.5" fits 8 thru
15" 5 lug hubs

[Read More](#)

SKU: D2EQT545CHS

Categories: [Accessories](#)

Product Description

Part# QT545CHS by PhoenixUSA

- Chrome Plated Plastic Center Cap for 8 - 15" Rims
- Fits only 5 on 4.5" Bolt Pattern
- Also fits over budding bearings



PHoenix USA Chrome-plated

Hubcover 5 lug on 4.5" 2.75" EMBLEM fits 8 thru 15" 5 lug hubs

Phoenix USA Chrome-plated Hubcover 5 lug on 4.5" fits 8 thru 15" 5 lug hubs; 2.75" EMBLEM

[Read More](#)

SKU: D2EQT545CHN

Categories: [Accessories](#)

Product Description

- Chrome Plated Plastic Center Cap for 8 - 15" Rims
- 2.75" EMBLEM
- Fits only 5 on 4.5" Bolt Pattern
- Also fits over budding bearings



Phoenix USA Chrome-plated Hubcover 5 lug on 5"

Phoenix USA Chrome-plated Hubcover 5 lug on 5" bolt pattern

[Read More](#)

SKU: D2EQT550CH4

Categories: [Accessories](#)

Product Description

Part# QT545CHS by PhoenixUSA

- Chrome Plated Plastic Center Cap for 8 - 15" Rims
 - Fits only 5 on 4.5" Bolt Pattern
 - Also fits over budding bearings
-



PHoenix USA Chrome-plated Hubcover 6 lug on 5.5" fits 15 & 16" 6 lug hubs

Phoenix USA Chrome-plated Hubcover 6 lug on 5.5" fits 15 & 16"
6 lug hubs

[Read More](#)

SKU: D2EQT655CHN

Categories: [Accessories](#)

Product Description

Part # QT655CHN by Phoenix USA

- Chrome Plated Plastic Center Cap for 15 & 16" Rims
- Fits only 6 on 5.5" Bolt Pattern
- Also fits over budding bearings



Phoenix USA Chrome-plated Hubcover 8 lug on 6.5" fits 16" 8 lug

hubs

Phoenix USA Chrome-plated Hubcover 8 lug on 6.5" fits 16" 8 lug hubs and 13/16" OD lug nuts

[Read More](#)

SKU: D2EQT765CHN

Categories: [Accessories](#)

Product Description

Part # QT765CHN

- Chrome Plated Plastic Center Cap for 16" Rims
- Fits only 8 on 6.5" Bolt Pattern
- Also fits over budding bearings



Phoenix USA WHITE Hubcover 5 lug on 4.5" fits 8 thru 15" 5 lug hubs

Phoenix USA WHITE Hubcover 5 lug on 4.5" fits 8 thru 15" 5 lug hubs

[Read More](#)

SKU: D2EQT545WHS

Categories: [Accessories](#)

Product Description

- WHITE Plastic Center Cap for 8 - 15" Rims
 - Fits only 5 on 4.5" Bolt Pattern
 - Brand: Phoenix USA
 - Part #: QT545WHS
 - Also fits over budding bearings
-



Radial ST205/75R15 5H/C ply Galvanized Trailer Wheel Assembly

32397 : LoadStar Karrier Radial ST205/75R15 5H/C ply
Galvanized Trailer Wheel Assembly !

[Read More](#)

SKU: D2E32397

Categories: [15"](#)

Product Description

- **Tire Specs**
 - **RADIAL** ST205/75R15 C ply (6 ply)
 - F78x15 Alternate Size
 - High Speed Trailer Tire
 - Tubeless Type
 - Load Range C, 1820# capacity
 - Sidewall 8.1"
 - O.D. 27.3"
 - Max PSI 50
 - RIM 15x5.5
 - Steel Belted Constructed Tire for Smooth Ride and Increased Tread Wear.
 -
 - **Rim Specs**
 - 15"x5" Galvanized Spoke Steel Rim
 - Bolt Pattern 5 x 4.5"
 - Rim Capacity & PSI 1820# / 50PSI
 - 0 offset
 - 3.19" Pilot Diameter
-



Radial ST205/75R15 5H/C ply Silver Mod Trailer Wheel Assembly

ST205/75R15 5H/C ply SILVER MOD Radial Trailer Wheel Assembly!

[Read More](#)

SKU: Y305110

Categories: [15"](#)

Product Description

- **Tire Specs**
- **RADIAL**
- ST205/75R15 C ply (6 ply)
- F78x15 Alternate Size
- High Speed Trailer Tire
- Tubeless Type
- Load Range C, 1820# capacity
- Sidewall 8.1"
- O.D. 27.3"
- Max PSI 50
- RIM 15x5.5
- Nylon Bias Ply Constructed Tire for Durability and Bruise Resistance.
- The LoadStar Trailer tire provides a 2 year warranty with the warranty Phone number imprinted on each tire.
- These tires provide: Longer Wear, Better Towing Stability, Reduced Rolling Resistance and meets all US Dept of Transportation requirements.
- Down To Earth Factory OEM Tire.
-
-
-

- **Rim Specs**
- 15"x5" Silver Mod Hole Steel Rim Powder Coated
- Bolt Pattern 5 x 4.5"
- Rim Capacity & PSI 1820# / 50PSI
- 0 offset
- 3.19" Pilot Diameter



Radial ST225/75R15 6H/D ply Gloss BLACK MOD Trailer Wheel Assembly

D2E32566 : LoadStar ST225/75R15 6H/D ply Gloss BLACK MOD HOLE Radial Trailer Wheel Assembly !

[Read More](#)

SKU: D2E33043

Categories: [15"](#)

Product Description

- **Tire Specs**
- **RADIAL**
- **KENDA LOADSTAR KARRIER ST225/75R15 Dply (8 PLY)**
- H78x15 Alternate Size
- High Speed Trailer Tire
- Tubeless Type
- Radial Ply
- Load Range D, 2540# capacity
- S.W: 8.9"
- O.D: 28.4"
- Max PSI 65
- Rim 15x6
- The LoadStar Trailer tire provides a 2 year warranty with the warranty number imprinted on each tire.
- These tires provide: Longer Wear, Better Towing Stability, Reduced Rolling Resistance and meets all US Dept of Transportation requirements.
-
-

-
- Rim Specs
- 15"x6" Black Mod Hole Steel Rim Powder Coated
- Bolt Pattern 6 x 5.5"
- Rim Capacity & PSI 2830# / 80PSI
- 0 offset
- 4.27" Pilot Diameter



Radial ST235/80R16 Aluminum Edge 8H/E Wheel Assembly w/ Caps/Nuts

ST235/80R16 EDGE Aluminum 8H/E Assembly

[Read More](#)

SKU: Y816078-1

Categories: [16"](#)

Product Description

Completely Assembled Unit including Stainless Center Cap and (8) Acorn Lug Nuts

Tire: ST235/80R16 Eply mated to a 16"x6" 8 on 6.5" Hole Bolt Pattern EDGE Aluminum Rim, 3520# capacity assembly

Tire Specs:

- Ranier Radial Tire ST235/80R16 Eply 10PLY
- High Speed Trailer Tire
- Tubeless Type
- Radial Ply
- Load Range E, 3520# capacity
- S.W: 9.4"
- O.D: 30.9"
- Max PSI 80
- Rim
16x6

- **Rim Specs**
 - 16"x6" Alum
 - Bolt Pattern 8 x 6.5"
 - Pilot Diameter
 - Rim Capacity 4080#
 - 0 offset
 - 4.90" Pilot Diameter
-



Radial ST235/80R16 Steel BLACK Modular Hole 8H/E Assembly

ST235/80R16 Steel Black Modular Hole 8H/E Assembly

[Read More](#)

SKU: 34915

Categories: [16"](#)

Product Description

Completely Assembled Unit

Tire: ST235/80R16 Eply mated to a 16"x6" 8 on 6.5" Hole Bolt Pattern BLACK PAINTED Steel Modular Hole Rim, 3500# capacity assembly

Tire Specs:

- Radial Tire ST235/80R16 Eply 10PLY
- High Speed Trailer Tire
- Tubeless Type
- Radial Ply
- Load Range E, 3500# capacity
- S.W: 9.4"
- O.D: 30.9"
- Max PSI 90
- Rim
16x6

- **Rim Specs**
 - 16"x6" Black Modular Hole
 - Bolt Pattern 8 x 6.5"
 - Pilot Diameter
 - Rim Capacity & PSI 3750# / 110PSI
 - 0 offset
 - 4.90" Pilot Diameter
-



Radial ST235/80R16 Steel BLACK Modular Hole 8H/G Assembly

ST235/80R16 Steel BLACK Modular Hole 8H/G Assembly

[Read More](#)

SKU: D2E9400869-TT-1

Categories: [16"](#)

Product Description

Completely Assembled Unit

Tire: ST235/80R16 Gply mated to a 16"x6" 8 on 6.5" Hole Bolt Pattern BLACK PAINTED Steel Modular Hole Rim, 4080# capacity assembly

Tire Specs:

- Radial Tire ST235/80R16 Gply 14PLY
- High Speed Trailer Tire
- Tubeless Type
- Radial Ply
- Load Range G, 4080# capacity
- S.W: 9.4"
- O.D: 30.9"
- Max PSI 110
- Rim
16x6

- **Rim Specs**
- 16"x6" BLACK Modular Hole

- Bolt Pattern 8 x 6.5"
 - Pilot Diameter
 - Rim Capacity & PSI 4080# / 110PSI
 - 0 offset
 - 4.90" Pilot Diameter
-



Radial ST235/80R16 Steel Silver Modular Hole 8H/E Assembly

ST235/80R16 Steel Silver Modular Hole 8H/E Assembly

[Read More](#)

SKU: Y816078

Categories: [16"](#)

Product Description

Completely Assembled Unit

Tire: ST235/80R16 Eply mated to a 16"x6" 8 on 6.5" Hole Bolt Pattern SILVER PAINTED Steel Modular Hole Rim, 3500# capacity assembly

Tire Specs:

- Ranier Radial Tire ST235/80R16 Eply 10PLY
- High Speed Trailer Tire
- Tubeless Type
- Radial Ply
- Load Range E, 3500# capacity
- S.W: 9.4"
- O.D: 30.9"
- Max PSI 90
- Rim
16x6

- **Rim Specs**
 - 16"x6" Silver Modular Hole
 - Bolt Pattern 8 x 6.5"
 - Pilot Diameter
 - Rim Capacity & PSI 3750# / 110PSI
 - 0 offset
 - 4.90" Pilot Diameter
-



RANIER Radial ST205/75R15 5H/C ply SILVER MOD Trailer Wheel Assembly

RANIER ST205/75R15 5H/C ply SILV MOD Radial Trailer Wheel
Assembly

[Read More](#)

SKU: D2E9400303M-TT-1

Categories: [15"](#)

Product Description

- **Tire Specs**
 - **RADIAL**
 - RANIER ST205/75R15 C ply (6 ply)
 - F78x15 Alternate Size
 - •High Speed Trailer Tire
 - •Tubeless Type
 - Load Range C, 1820# capacity
 - Sidewall 8.1"
 - O.D. 27.3"
 - Max PSI 50
 - RIM 15x5.5
 -
 - **Rim Specs**
 - 15"x5" SILVER MODULAR HOLE Steel Rim, Powder Coated
 - Bolt Pattern 5 x 4.5"
 - Rim Capacity & PSI 1820# / 50PSI
 - 0 offset
 - 3.19" Pilot Diameter
-



RANIER Radial ST205/75R15 5H/C ply SILVER MOD Trailer Wheel Assembly

RANIER ST205/75R15 5H/C ply SILV MOD Radial Trailer Wheel
Assembly

[Read More](#)

SKU: D2E9400303M-TT-1-2

Categories: [15"](#)

Product Description

- **Tire Specs**
 - **RADIAL**
 - RANIER ST205/75R15 C ply (6 ply)
 - F78x15 Alternate Size
 - •High Speed Trailer Tire
 - •Tubeless Type
 - Load Range C, 1820# capacity
 - Sidewall 8.1"
 - O.D. 27.3"
 - Max PSI 50
 - RIM 15x5.5
 -
 - **Rim Specs**
 - 15"x5" SILVER MODULAR HOLE Steel Rim, Powder Coated
 - Bolt Pattern 5 x 4.5"
 - Rim Capacity & PSI 1820# / 50PSI
 - 0 offset
 - 3.19" Pilot Diameter
-



RANIER ST RADIAL ST205/75R15 TRAILER TIRE

[Read More](#)

SKU: RN205X15CTL

Categories: [15"](#)

Product Description

• Features & Benefits

This high quality trailer tire features a 6 year limited warranty with roadside assistance for peace of mind. The Rainier ST was designed with original equipment manufacturers in mind. With a light truck inspired tread pattern, added durability, high load capacity, and can withstand the rigorous demands of ST tires.

- Strong sidewalls to protect against accidental cuts and wear
 - Wider center rib for improved wet traction and lower rolling resistance
 - Solid main tread blocks on tread to enhance self-cleaning ability
 - Varied tread pitch designed to reduce road noise
 - Integrated tread blades designed to enhance tires road grip in all weather
 - Improved heat dissipation with extended tread life
 - 6 year warranty with roadside assistance
-



Spare Tire Mount for D2E Dump Trailers 14K & 16K, fits 8x6.5" Bolt Pattern

Weld-on HD Steel Spare Tire Mount for 14K & 16K Dump Trailers

Fits 8 lug

[Read More](#)

SKU: 17.5STBD

Categories: [16"](#), [17.5"](#), [Spare Tire Mounting Systems](#)

Product Description

This is a weld-on HD Steel Spare Tire Mount for 14K & 16K Dump Trailers
Fits 8 lug

Direct weld on for Dump Trailers made by Down To Earth Trailers

Includes (3) 1/2" Lug Studs & Nuts to mount wheel





Spare Tire Mount for D2E Dump Trailers 7K & 10K, fits 5 & 6Lug Bolt Pattern

Weld-on HD Steel Spare Tire Mount for 7K & 10K Dump Trailers

Fits 5x4.5" & 6x5.5" lug pattern

[Read More](#)

SKU: 17.5STBD-1

Categories: [16"](#), [17.5"](#), [Spare Tire Mounting Systems](#)

Product Description

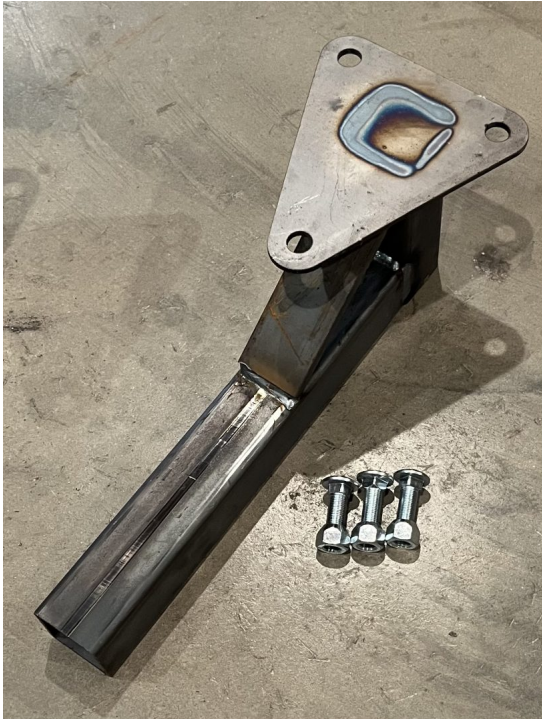
This is a weld-on HD Steel Spare Tire Mount for 7K & 10K Dump Trailers

Fits 5x4.5" & 6x5.5" lug pattern

Direct weld on for Dump Trailers made by Down To Earth Trailers

Includes (2) 1/2" Lug Studs & Nuts to mount wheel





Spare Tire Mount for D2E Non-Dump Trailers 14K & 16K, fits 8x6.5" Bolt Pattern

Weld-on HD Steel Spare Tire Mount for 14K & 16K Non-Dump Trailers such as Car Haulers, Utility and Equipment Trailers

Fits 8 lug

[Read More](#)

SKU: 17.5STBND

Categories: [16"](#), [17.5"](#), [Spare Tire Mounting Systems](#)

Product Description

This is a weld-on HD Steel Spare Tire Mount for 14K & 16K Non-Dump Trailers

Fits 8 lug

Used on Car Haulers, Utility, Equipment Trailers

Direct weld on for Dump Trailers made by Down To Earth Trailers

Includes (3) 1/2" Lug Studs & Nuts to mount wheel





Spare Tire Mount for D2E Non-Dump Trailers 3.5K & 5.2K, fits 5 & 6 Lug Bolt Pattern

Weld-on HD Steel Spare Tire Mount for 7K & 10K Non-Dump Trailers

Fits 5x4.5" & 6x5.5" lug pattern

[Read More](#)

SKU: 17.5STBND-1

Categories: [15"](#), [Spare Tire Mounting Systems](#)

Product Description

This is a weld-on HD Steel Spare Tire Mount for 7K & 10K Non-Dump Trailers

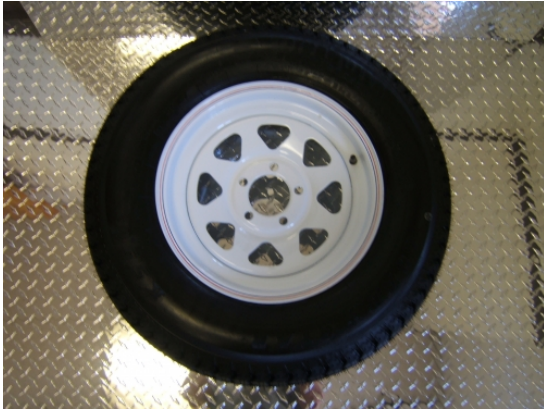
Fits 5x4.5" & 6x5.5" lug pattern

Used on Car Haulers, Utility, Equipment Trailers

Direct weld on for Dump Trailers made by Down To Earth Trailers

Includes (2) 1/2" Lug Studs & Nuts to mount wheel





ST205/75D15 White Spoke 5Hx4.5/C Assembly

KENDA LOADSTAR K550 ST205/75D15 White Spoke 5Hx4.5/C
Assembly

[Read More](#)

SKU: D2E3S640

Categories: [15"](#)

Product Description

- Tire Specs
 - KENDA LOADSTAR K550 ST205/75D15 C ply (6 ply)
 - F78x15 Alternate Size
 - •High Speed Trailer Tire
 - •Tubeless Type
 - Load Range C, 1820# capacity
 - Sidewall 7.8"
 - O.D. 27.4"
 - Max PSI 50
 - Nylon Bias Ply Constructed Tire for Durability and Bruise Resistance.
 - The LoadStar Trailer tire provides a 2 year warranty with the warranty Phone number imprinted on each tire.
 - These tires provide: Longer Wear, Better Towing Stability, Reduced Rolling Resistance and meets all US Dept of Transportation requirements.
 - Down To Earth Factory OEM Tire.
-
- Rim Specs
 - 15"x5" White Spoke Steel Rim Powder Coated w/ Red/Blue Pinstripe &
 - Bolt Pattern 5 x 4.5"
 - Rim Capacity & PSI 1820# / 50PSI
 - 0 offset
 - 3.19" Pilot Diameter
-



ST205/75R15 Aluminum T07/BM Wheel / Tire Assembly 5H x 4.5" BP

15" RADIAL Aluminum Split Spoke Wheel / Tire Assembly 5H x 4.5" BP T07 in Gloss Black

[Read More](#)

SKU: D2ET07

Categories: [15"](#)

Product Description

- INCLUDES SS CAP AND ACORN LUG NUTS, NOT SHOWN.
 -
 - Tire Specs
 - ST205/75R15 C ply (6 ply)
 - F78x15 Alternate Size
 - High Speed Trailer Tire
 - Tubeless Type
 - Load Range C, 1820# capacity
 - Sidewall 7.8"
 - O.D. 27.4"
 - Max PSI 50
 - RADIAL Ply Constructed Tire for Smooth Ride and Longevity.
 - Rim Specs:
 - - 15"x6" 1 Piece Aluminum
 - T07 in Gloss Black
 - Clear Coated Rim
 - Bolt Pattern 5 x 4.5"
 - Pilot Diameter 3.19"
 - Rim Capacity 2150#
 - 0 offset
-



ST215/75R17.5 Steel BLACK Solid 8H/H Ply Assembly

ST215/75R17.5 Steel Black Solid 8H/H Ply Assembly

[Read More](#)

SKU: 34915-1

Categories: [17.5"](#)

Product Description

Completely Assembled Unit

Tire: ST215/75R17.5 Hply mated to a 17.5"x6.75" 8 on 6.5" Hole Bolt Pattern BLACK PAINTED Steel Solid Rim, 4805# capacity assembly. Tire brand may differ depending on availability. We will match for orders so that all of a specific order is the same brand.

Tire Specs:

- Radial Tire ST215/75R17.5 Hply 16PLY
- High Speed Trailer Tire
- Tubeless Type
- Radial Ply
- Load Range H, 4805# capacity
- S.W: 9.7"
- O.D: 31.3"
- Max PSI 123
- Rim 17.5x6.75

- **Rim Specs**
 - 17.5"x6.75" Black Modular Hole
 - Bolt Pattern 8 x 6.5"
 - Pilot Diameter 4.75"
 - Rim Capacity & PSI 6000# / 130PSI
 - 0 offset
-



ST225/75R15 6H/E ply EDGE Aluminum Trailer Wheel Assembly w/ Caps/Nuts

ST225/75R15 6H/E ply Edge Alum Radial Trailer Wheel Assembly

[Read More](#)

SKU: Y30613-1

Categories: [15"](#)

Product Description

Complete Assembly including Stainless Center Cap and (6) Acorn Lug Nuts

- **Tire Specs**
- **RADIAL**
- **ST225/75R15 Eply (10 PLY)**
- H78x15 Alternate Size
- High Speed Trailer Tire
- Tubeless Type
- Radial Ply
- Load Range E, 2860# capacity
- S.W: 8.9"
- O.D: 28.4"
- Max PSI 80
- Rim 15x6
- These tires provide: Longer Wear, Better Towing Stability, Reduced Rolling Resistance and meets all US Dept of Transportation requirements.
-
-
-
- **Rim Specs**
- 15"x6" Aluminum w/ Black Inlay
- Bolt Pattern 6 x 5.5"
- Rim Capacity & PSI 2830# / 80PSI
- 0 offset
- 3.75" Pilot Diameter



ST225/75R15 6H/E ply Silver Mod Trailer Wheel Assembly

ELEVATE ST225/75R15 6H/D ply Silver Mod Hole Radial Trailer Wheel Assembly

[Read More](#)

SKU: Y30613

Categories: [15"](#)

Product Description

- **Tire Specs**
- **RADIAL**
- **ST225/75R15 Eply (10 PLY)**
- H78x15 Alternate Size
- High Speed Trailer Tire
- Tubeless Type
- Radial Ply
- Load Range E, 2860# capacity
- S.W: 8.9"
- O.D: 28.4"
- Max PSI 80
- Rim 15x6
- The LoadStar Trailer tire provides a 2 year warranty with the warranty number imprinted on each tire.
- These tires provide: Longer Wear, Better Towing Stability, Reduced Rolling Resistance and meets all US Dept of Transportation requirements.
-
-
-
- **Rim Specs**
- 15"x6" SILVER MOD HOLE Steel Rim Powder Coated

- Bolt Pattern 6 x 5.5"
 - Rim Capacity & PSI 2830# / 80PSI
 - 0 offset
 - 4.27" Pilot Diameter
-



ST235/80R16 E ply RADIAL Tire

LoadStar Karrier ST235/80R16 E ply (10ply) RADIAL Tire

[Read More](#)

SKU: 10248

Categories: [16"](#)

Product Description

- ST235/80R16 Eply
 - High Speed Trailer Tire
 - Tubeless Type
 - Radial Ply
 - Load Range E, 3500# capacity
 - S.W: 9.4"
 - O.D: 30.9"
 - Max PSI 90
 - Rim 16x6
 - The LoadStar Trailer tire provides a 2 year warranty with the warranty number imprinted on each tire.
 - These tires provide: Longer Wear, Better Towing Stability, Reduced Rolling Resistance and meets all US Dept of Transportation requirements.
-



Stainless Center Cap w/ Chrome Button 3.19" BORE

[Read More](#)

SKU: 90175L

Categories: [Accessories](#)

Product Description

- Stainless Steel Center Cap
 - Has a Removable Chrome End Cap for Easy Lube Spindles
 - Bore Size is 3.19"
 - Fits all 5 lug Alum and Chrome Rims in this store as well as some painted and galvanized.
-



Stainless Center Cap w/ Chrome Button 4.25" BORE

[Read More](#)

SKU: 90077

Categories: [Accessories](#)

Product Description

- Stainless Steel Center Cap
- Has a Removable Chrome End Cap for Easy Lube Spindles
- Bore Size is 4.25"
- Typical on 6 lug Alum and Chrome Rims



Stainless Center Cap w/ Chrome Button 4.82" BORE 16" HD rims

Stainless Center Cap w/ Chrome Button 4.82" BORE 16" HD rims

[Read More](#)

SKU: 90156C

Categories: [Accessories](#)

Product Description

- Stainless Steel Center Cap for 16" Rims HD
 - Has a Removable Chrome End Cap for Easy Lube Spindles
 - Bore Size is 4.82"
 - Fits all 8 lug HD Alum and Chrome Rims in this store as well as some painted and galvanized.
-