

(2) 2 Wire Light Harness Connecting Pigtail

(2) 2 Wire Light Harness Connecting Pigtail

[Read More](#)

SKU: (2)A-49PB

Categories: [Lights & Electrical Accessories](#)

Product Description



(2) 2" Rubber Grommet

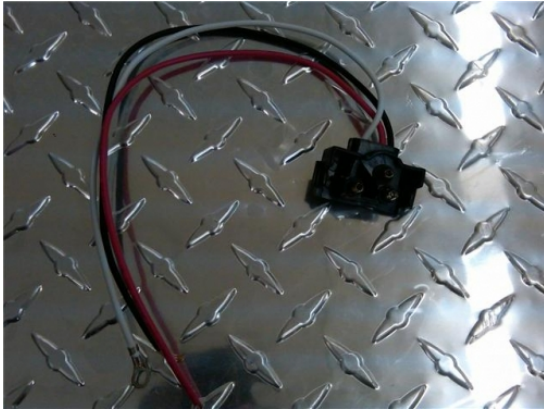
(2) 2" Rubber Grommet

[Read More](#)

SKU: A-54GB

Categories: [Lights & Electrical Accessories](#)

Product Description



(2) 3 Wire Light Harness Connecting Pigtail

(2) 3 Wire Light Harness Connecting Pigtail

[Read More](#)

SKU: (2)A-47PB

Categories: [Lights & Electrical Accessories](#)

Product Description



(2) 6" Light Grommet

(2) 6" Light grommet

[Read More](#)

SKU: A-70GB

Categories: [Lights & Electrical Accessories](#)

Product Description

6" Oval Light Rubber Grommet



6" LED light (Stop, Turn, Signal) Red Color

6" OEM LED Replacement light

[Read More](#)

SKU: STL-72RB

Categories: [Lights & Electrical Accessories](#)

Product Description

Brand : OPTRONICS

Color : RED

Number of Diodes : 10

Size : 6 inch Oval

Fits in 6" Rubber Grommet and Connects with 3 plug Harness



7 Way RV pigtail Replacement 8'

Factory 7 Way RV style Replacement 6' in Length

[Read More](#)

SKU: D2E20044

Categories: [Wiring & Adapters](#)

Product Description

Down 2 Earth Factory 7Way RV Style Pigtail

Length: 8 Ft



D2E Factory 4 Way EZ Wiring Harness for Single Axle Utility Trailers, 25'

EZ Pull 25' 4 Way Harness

[Read More](#)

SKU: 38254

Categories: [Wiring & Adapters](#)

Product Description

EZ Pull (Circle) 25' Harness

Factory Down 2 Earth Trailers OEM harness



Front Side Marker Housing for 3/4" LED lights

Front Side Marker Housing for 3/4" LED lights

[Read More](#)

SKU: FrntMark3/4"

Categories: [Light Housings / Brackets](#)

Product Description

Each bracket measures: 3"L x 2"W x 1/8"H

Cut Out houses a 3/4" LED Light

Unpainted Metal Finish with Oil Coating for Rust Prevention

Factory OEM bracket.



Jammy ID Light Bar LED 3 Diode

ID Light Bar LED 3 Diode

[Read More](#)

SKU: S51RR001-1

Categories: [Lights & Electrical Accessories](#)

Product Description

Brand : Jammy

Color : RED LED

Number of Diodes : 3

Size : 14-7/8" inch

Mounting Holes are on 6" Centers +or- .125"



Jammy ID Light Bar LED 9 Diode

ID Light Bar LED 6 Diode

[Read More](#)

SKU: J-5695-R

Categories: [Lights & Electrical Accessories](#)

Product Description

Brand : Jammy

Color : RED

Number of Diodes : 6

Size : 15.5" inch

Mounting Holes are on 6" Centers +or- .125"



JAMMY Replacement Light for ID Bar

Replacement Light for ID Light Bar LED 2 Diode

[Read More](#)

SKU: J-IDBarLens

Categories: [Lights & Electrical Accessories](#)

Product Description

Brand : JAMMY

Color : RED

Number of Diodes : 2

Size : 2.5" inch

Mounting Holes are Plug In

This is the removable / replaceable Red Lights on the ID Bar

Began Late 2016 on D2E Trailers



LED Left Hand Standard 2 stud mount Tail Light

Left (Driver) Hand LED Standard 2 stud mount Tail Light

[Read More](#)

SKU: TL LED Left Hand Square

Categories: [Lights & Electrical Accessories](#)

Product Description

Left (Driver) Hand LED Tail Light OEM features illumination light for license plates mounts via 2 studs approx. 2" apart LED bulbs



LED light 2" Amber Color with grommet and harness

2" LED Amber Colored Light

[Read More](#)

SKU: MCL-55AB

Categories: [Lights & Electrical Accessories](#)

Product Description

Brand : OPTRONICS

Color : AMBER

Number of Diodes : 4

Size : 2 inch Round

Fits in 2" Rubber Grommet and Connects with 2 plug Harness
Grommet and Pigtail are included.



LED light 2" Red Color with grommet and harness

2" LED Red Colored Light

[Read More](#)

SKU: MCL-55RB

Categories: [Lights & Electrical Accessories](#)

Product Description

Brand : OPTRONICS

Color : RED

Number of Diodes : 4

Size : 2 inch Round

Fits in 2" Rubber Grommet and Connects with 2 plug Harness

Grommet and Pigtail are included.



LED light 2.5"; Amber Color with Holes for Mounting

2.5" LED Amber Colored Light

[Read More](#)

SKU: J-515-A

Categories: [Lights & Electrical Accessories](#)

Product Description

Brand : JAMMY

Color : AMBER

Number of Diodes : 2

Size : 2.5 inch Oval

1-7/8" Mounting Hole Centers



LED light 2.5"; Red Color with Holes

for Mounting

2.5" LED Red Colored Light

[Read More](#)

SKU: J-515-R

Categories: [Lights & Electrical Accessories](#)

Product Description

Brand : JAMMY

Color : RED

Number of Diodes : 2

Size : 2.5 inch Oval

1-7/8" Mounting Hole Centers



LED light 3/4" Amber Color with grommet and harness

3/4" LED Amber Colored Light

[Read More](#)

SKU: 3/4" AMBER

Categories: [LED Lights](#), [Lights & Electrical Accessories](#)

Product Description

Brand : OPTRONICS

Color : AMBER

Total Length: 12"

Number of Diodes : 1

Size : 3/4 inch Round

Fits in 3/4" Rubber Grommet and Connects with 2 plug Harness
Grommet and Pigtail are included.



LED light 3/4" Red Color with grommet and harness

3/4" LED Red Colored Light

[Read More](#)

SKU: 3/4"RED

Categories: [Lights & Electrical Accessories](#)

Product Description

Brand : OPTRONICS

Color : RED

Total Length: 12"

Number of Diodes : 1

Size : 3/4 inch Round

Fits in 3/4" Rubber Grommet and Connects with 2 plug Harness
Grommet and Pigtail are included.



LED Right Hand Standard 2 stud mount Tail Light

Right (Passenger) Hand LED Standard 2 stud mount Tail Light

[Read More](#)

SKU: TL LED Right Hand Square

Categories: [Lights & Electrical Accessories](#)

Product Description

Right (Passenger) Hand LED Tail Light OEM features illumination light for license plates mounts via 2 studs approx. 2" apart LED bulbs



Left & Right Trailer 3/4" Tail Light Boxes used on 82" wide trailers

Left and Right Side 3/4" boxes used on 82" wide trailers

[Read More](#)

SKU: LtBoxes3/4"

Categories: [Light Housings / Brackets](#)

Product Description

Each box measures: 8.25"L x 3.25"W x 4"H not including the tag bracket on the Left box.

Cut Out on End houses a 3/4" LED Light

Cut Out on Rear houses a 6" Oval LED light

Includes a Weld-On Tag Bracket

Unpainted Metal Finish with Oil Coating for Rust Prevention
Factory OEM boxes.



Left Hand Metal Tail Light Box w/ 6" and 3/4" LED lights

Left Hand Metal Tail Light Box w/ 6" and 3/4" LED lights

[Read More](#)

SKU: MetBoxKitLH

Categories: [Lights & Electrical Accessories](#)

Product Description

Brand: D2E

Left Hand Side Metal Tail Light Box w/ 6" Oval Red LED and 3/4" Round LED lights

Includes Tag Light and Tag Plate



Left Hand Standard 2 stud mount Tail Light

Left Hand Standard 2 stud mount Tail Light!

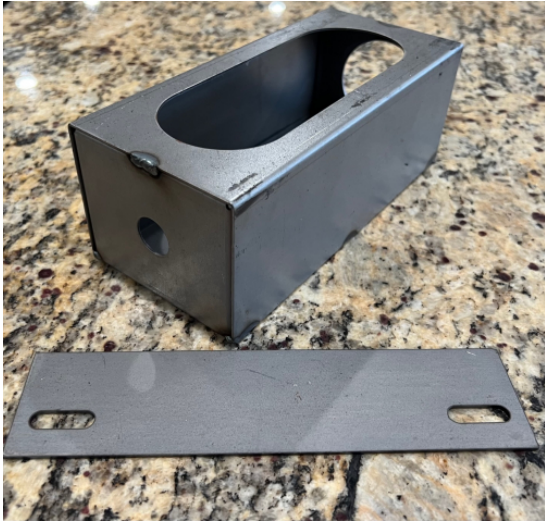
[Read More](#)

SKU: Tail light Left Hand Square

Categories: [Lights & Electrical Accessories](#)

Product Description

Left Hand Tail Light OEM features illumination light for license plates mounts via 2 studs approx. 2" apart incandescent light bulbs



Left Hand Trailer Tail Light Boxes used on 82" wide trailers

Left Side Light boxes used on 82" wide trailers

[Read More](#)

SKU: LtBoxesLH

Categories: [Light Housings / Brackets](#)

Product Description

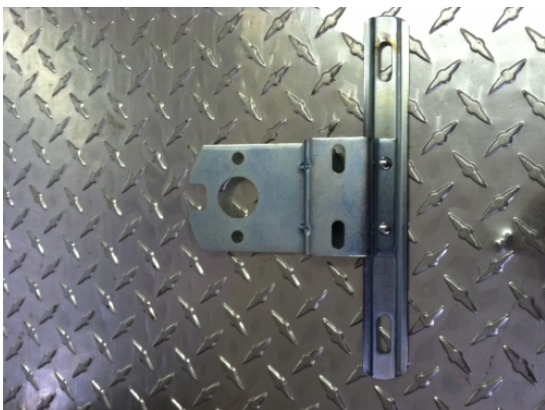
Each box measures: 8.25"L x 3.25"W x 4"H not including the tag bracket on the Left box.

Cut Out houses 2" LED lights on the end

Cut Out Houses 6" LED Oval Light on Rear

Unpainted Metal Finish with Oil Coating for Rust Prevention

Factory OEM boxes.



Metal License Plate Bracket

Metal License Plate Free Shipping

[Read More](#)

SKU: Metal License Plate Bracket

Categories: [Lights & Electrical Accessories](#)

Product Description

Metal License Plate Bracket features illumination light for enables attachment of a license plate mounts via 2 studs approx. 2" apart



Red Plastic Replacement Lens for OEM 2 stud mount Trailer Lights

Red Plastic Replacement Lens for OEM 2 stud mount Trailer Lights

[Read More](#)

SKU: 440-15

Categories: [Lights & Electrical Accessories](#)

Product Description

Replacement Lens for OEM Lights Dimensions: 4.5" x 4.5"
Peterson Part# 440-15



Red Plastic Replacement SIDE 1" Lens for OEM 2 stud mount Trailer Lights

Red Plastic Replacement SIDE 1" Lens for OEM 2 stud mount Trailer Lights

[Read More](#)

SKU: 56-15R

Categories: [Lights & Electrical Accessories](#)

Product Description

Replacement SIDE Lens for OEM Lights Dimensions: 2.75" x 1.25"



Right Hand Metal Tail Light Box w/ 6" and 3/4" LED lights

Right Hand Metal Tail Light Box w/ 6" and 3/4" LED lights

[Read More](#)

SKU: MetBoxKitRH

Categories: [Lights & Electrical Accessories](#)

Product Description

Brand: D2E

Right Hand Side Metal Tail Light Box w/ 6" Oval Red LED and 3/4" Round LED lights



Right Hand Standard 2 stud mount Tail Light

Right (Passenger) Hand Standard 2 stud mount Tail Light

[Read More](#)

SKU: Tail light Right Hand Square

Categories: [Lights & Electrical Accessories](#)

Product Description

Right (Passenger) Hand Tail Light OEM features illumination light for license plates mounts via 2 studs approx. 2" apart incandescent light bulbs



Right Hand Trailer Tail Light Boxes used on 82" wide trailers

Right Side Light boxes used on 82" wide trailers

[Read More](#)

SKU: LtBoxesRH

Categories: [Light Housings / Brackets](#)

Product Description

Each box measures: 8.25"L x 3.25"W x 4"H not including the tag bracket on the Left box.

Cut Out houses 2" LED lights on the end

Cut Out Houses 6" LED Oval Light on Rear

Unpainted Metal Finish with Oil Coating for Rust Prevention

Factory OEM boxes.



SEALCO FRONT Section Factory Wiring Harness for Older Pre-2021ish Down To Earth OEM Trailers

Sealco factory harness, Front Section ONLY Part# TGE20 4080
Revision E If you have a different Revision Letter, it may not connect properly

[Read More](#)

SKU: TGE204080FRT

Categories: [Wiring & Adapters](#)

Product Description

SEALCO FRONT Piece Section Harness

Look where the cable pieces connect with a twist locker, it should have an oval with "Sealco" stamped in it.

Factory Down 2 Earth Trailers OEM harness that used the SEALCO HARNESSSES

Part # TGE20 4080FRONT

Fully Rubber Encased Harness

Includes wire running to breakaway box

Greatly simplifies trailer wiring and removes headaches with wiring issues.

Current Revision of Part #: E



TecNiq ID Light Bar LED 6 Diode

ID Light Bar LED 6 Diode

[Read More](#)

SKU: S51RR001

Categories: [Lights & Electrical Accessories](#)

Product Description

Brand : TecNiq

Color : RED LED

Number of Diodes : 6

Size : 16.5" inch

Mounting Holes are on 6" Centers +or- .125"



VISION LED FRONT Section Factory Wiring Harness for Newer 2023 - Current Down To Earth OEM Trailers

Vision LED Brand D2E factory harness, Front Section ONLY

[Read More](#)

SKU: VisionHarnFront

Categories: [Wiring & Adapters](#)

Product Description

VISION LED FRONT Piece Section Harness

Look where the cable pieces connect, it should have an Arrow stamped in it.

Factory Down 2 Earth Trailers OEM harness that uses the VISION LED Brand HARNESSES

Fully Rubber Encased Harness

Includes wire running to breakaway box

Greatly simplifies trailer wiring and removes headaches with wiring issues.
